



SUBMITTAL SHEET

ZAPSTR AIR PROVING SWITCH
SQUARE #10004040
ROUND (NEW)

ZVSSZAPSTR-08-09-1900

FEATURES

Why it's good:

• ZAPSTR (Zonex Air Proving Switch with Timer and Relay) is a simple, reliable way to interlock a booster fan with a laundry dryer or other air moving device.

How it works:

• The ZAPSTR senses positive air pressure in the duct, then triggers a relay to activate the desired device. It runs on a timer for ten minutes, then checks to see if positive pressure is still present. If there's pressure, it runs again, if not, it shuts off the device.

• **Promotes Clean Ductwork.** When used with a laundry dryer booster fan and a lint trap, the ZAPSTR will run the fan on a purge cycle to help ensure that the duct remains free of build up.

• **The little things.** The ZAPSTR installs easily on ductwork or on our booster fans. It wires easily to interlock devices.

• **Quality.** We are a family owned company, so we take this seriously. The ZAPSTR is made of heavy gauge galvanized steel, is cULus and CSA Certified.

• **Warranty.** 1 year warranty on parts



TYPICAL SPECIFICATION

Air proving switch shall be Zonex Ventilation Model ZAPSTR. Switch shall sense positive air pressure, and activate relay to 120v device above 0.05" Ps W.G. Switch shall be complete with recycling timer, with a 10 minute on, 15 seconds off cycle.

Specifications:

- Mounting Position: Diaphragm Vertical.
- Set Point Range: (Non Adjustable) 0.05 _+0.02" W.C. Pressure Rise.
- Measured Media: Air
- Operating Temperature Range: -40F to 180F (-40c to 82.2c)
- Life: 100,000 Cycles Minimum At 1/2 PSI Maximum Pressure Each Cycle and at Maximum Rated Electrical Load.
- Electrical Rating @ 60Hz - Sensing Switch
- 15A @ 125, 250 or 278VAC
- 1/8HP @ 125VAC, 1/4HP @ 250VAC
- Contract Arrangement: SPNO
- Position of Switch Contacts Before Pressure is Applied



FEATURES



CERTIFICATIONS



SHIPPING INFORMATION

Unit Weight: 1.1lbs (0.5g)

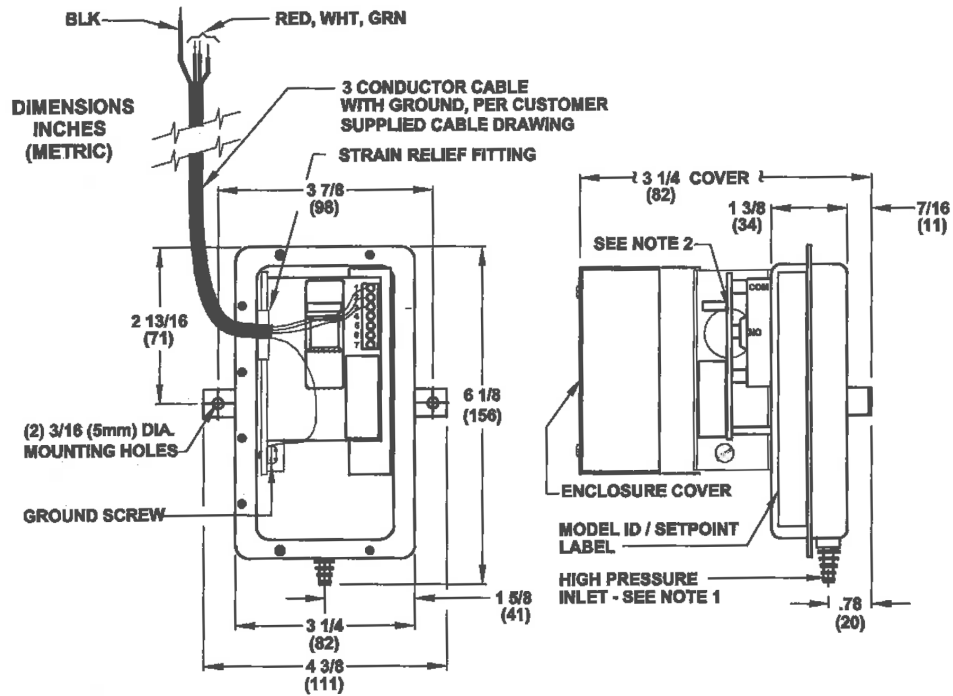
Shipping Dimensions:
 Single Box: 6 1/2" x 4 1/2" x 3 3/4"

REMARKS:	QTY:	JOB:
	TAG:	ARCHITECT:
ENGINEER:		
CONTRACTOR:		
DATE:		SUBMITTED BY:

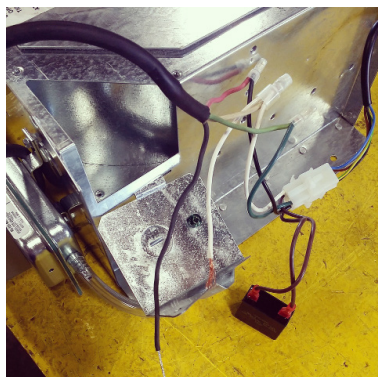
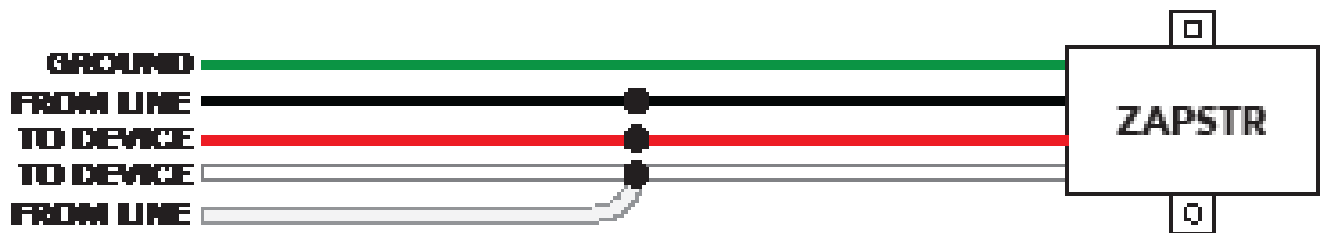
Design & specifications are subject to change without notice.



DIMENSIONS



WIRING DIAGRAM



- * Fan is constantly live, and relies on humidity to turn on/off.
- ** Override switch allows user to turn on fan.
- *** When function is turned off, fan will continue to run for selected time.

