



SUBMITTAL SHEET

ZBF-150

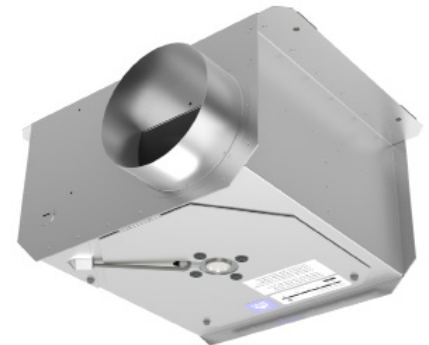
Booster Fan #10004038

ZVSSZBF150-09-08-2000

FEATURES

Why they're good:

- **Self-cleaning.** Sealed motor resists lint buildup and moisture.
- **Fits where you need it.** Low profile for tight installations where required; installs vertically or horizontally with integrated mounting flanges.
- **Efficient & Reliable.** With its PSC design & permanently lubricated and maintenance free ball bearings, our motor will give years of reliable quiet ventilation.
- **The little things.** Access to our motor and blower wheel is via a hinged access plate for easy cleaning. Our electrical access panel allows you to run conduit where you need it and has a special clip to keep it in place on the unit while you're wiring it up. We even design our own screws so that things stay tight and can be worked on with regular tools.
- **Quality.** We are a family owned company, so we take this seriously. The ZBF-150 is designed in Canada & built from 24 ga galvanized steel. We test every unit at the factory to ensure that it works as it should.
- **Warranty.** 1 year warranty on parts



TYPICAL SPECIFICATIONS

Booster fan shall be Zonex Ventilation Model ZBF-150. Fan housing shall be constructed of corrosion resistant 24 gauge galvanized steel with integrated mounting flanges. Rubber isolators shall be supplied for mounting. Fan shall have a field wiring compartment with integral disconnect receptacle. Discharge collar shall be galvanized steel with a 5" small end duct connector. (Fan shall sense positive air pressure in duct, and continue to run while positive pressure is present. When no longer present, fan shall run for 15 minutes to purge duct).

Motor shall be plug-in type, low RPM, and shall be permanently-lubricated and maintenance-free. Motor shall be of an energy efficient PSC design, and shall be suitable for continuous operation. Motor to have automatic-reset thermal overload protection. Impeller shall be backward-inclined & self-cleaning to prevent lint buildup. Motor to be fully-sealed for maximum durability in harsh conditions.

Motor shall be hinge-mounted to housing for easy access and cleaning. Air delivery shall be no less than: 161 cfm 0.2" Ps.

HVI CERTIFIED PERFORMANCE

ZBF-150 160 CFM @ 0.2" Ps

FEATURES



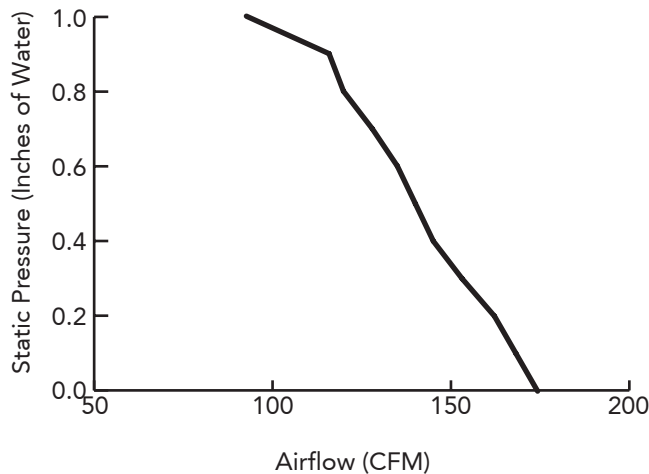
CERTIFICATIONS



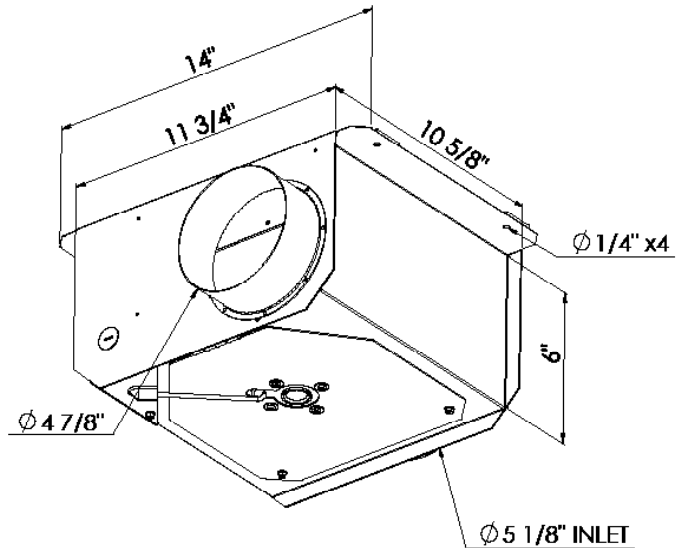
REMARKS:	QTY:	JOB:
	TAG:	ARCHITECT:
ENGINEER:		
CONTRACTOR:		
DATE:		SUBMITTED BY:



AIRFLOW PERFORMANCE



DIMENSIONS



PERFORMANCE

Tested to Standards AMCA/ANSI 210, AMCA 300, ASHRAE 51, HVI publication 905/916/920

Ps	0.0"	0.1"	0.2"	0.3"	0.4"	0.5"	0.6"	0.7"	0.8"	0.9"	1.0"
CFM	174	168	162	153	145	140	135	128	120	116	93

ELECTRICAL INFO

Nominal Voltage	Nominal RPM	Amps at 60 Hz	Watts
120VAC	2782	0.69	80.7

SHIPPING INFORMATION

Unit Weight: 8.8lbs (4kg)

Shipping Dimensions

Single Box: 15 1/2"x 13 1/2"x 8 1/2"

Pallet Quantity: 63units/pallet, 554 lbs (252 kgs)/pallet

Leed Packaging

In an effort to help reduce waste on the jobsite, we can ship in pallet quantities with minimal packaging. Our packaging is made from recycled post-consumer material, and is fully recyclable. This helps to earn LEED points in the "Construction Waste Management" category.

ACCESSORIES

Air Proving Switch

Model ZAPSTR Zonex Air Proving Switch with Timer and Relay available separately. Once airflow is detected (0.05" Ps), the switch activates the fan and runs for 10 minutes in order to purge duct.

Current Sensing Switch

Model ZCSS Zonex Current Sensing Switch senses current from a laundry dryer and activates fan.

Exhaust Wallboxes

Single wallbox (SWB5), Double wallbox (DWB5), Triple wallbox (TWB5) & grilles.

Lint Trap

Model ZLT Zonex Lint Trap

